

MONTHLY MEMBERSHIP PROGRESS REPORT

District 25 E

Results as of: 1/31/2024

GMT:

LOCATION INDIANA

GMT CA

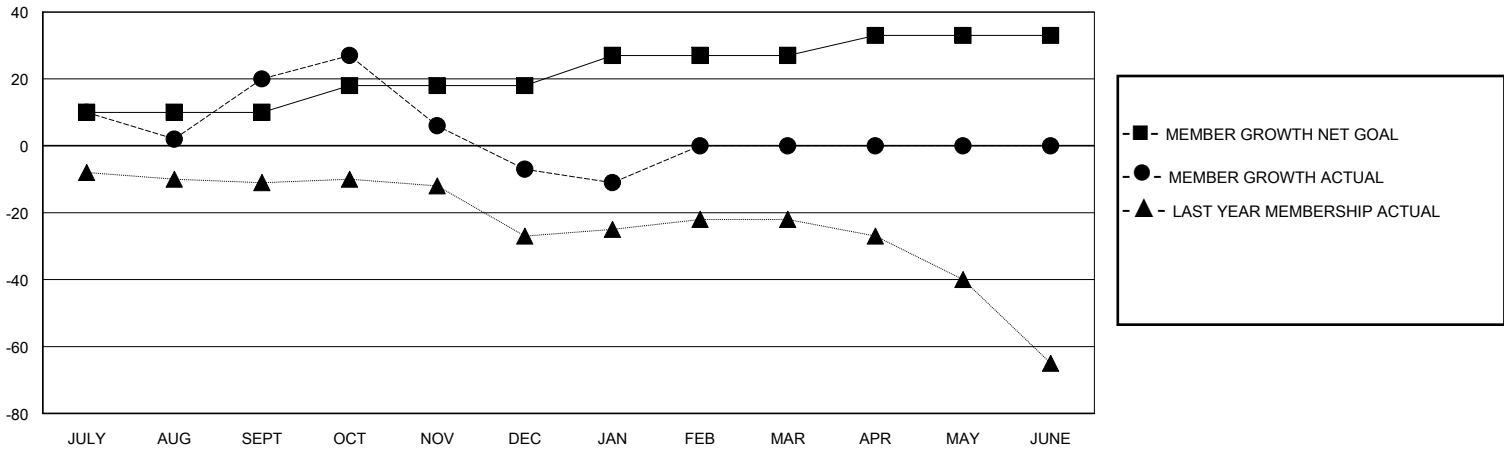
Clubs			
RESULTS FOR 2023-2024			
QUARTER	NEW CLUB GOAL	NEW CLUBS	DROPPED CLUBS
JULY/AUG/SEPT	0	0	0
OCT/NOV/DEC	0	0	1
JAN/FEB/MAR	1	0	0
APR/MAY/JUNE	0	0	0

Members			
RESULTS FOR 2023-2024			
QUARTER	MEMBER GROWTH NET GOAL	MEMBER GROWTH ACTUAL	DROPPED MEMBERS ACTUAL (including transfers)
JULY/AUG/SEPT	10	54	32
OCT/NOV/DEC	8	33	53
JAN/FEB/MAR	9	6	10
APR/MAY/JUNE	6	0	0

GOALS AND ACTUAL NEW CLUBS CUMULATIVE



GOALS AND ACTUAL MEMBERS CUMULATIVE



DROPPED CLUBS: 1	22 CLUBS OF 53 ADDED 1 OR MORE NEW MEMBERS	<u>GENDER DISTRIBUTION</u>	
<u>DROPPED MEMBERS</u>		MALE	737 (63.05%)
DECEASED	10	FEMALE	432 (36.95%)
CLUB CANCELLED	0	TOTAL FAMILY UNIT MEMBERS 427	
OTHER	85	FAMILY MEMBERS PAYING HALF DUES 218	
TOTAL	95		

[CLICK HERE FOR CUMULATIVE MEMBERSHIP DATA](#)